

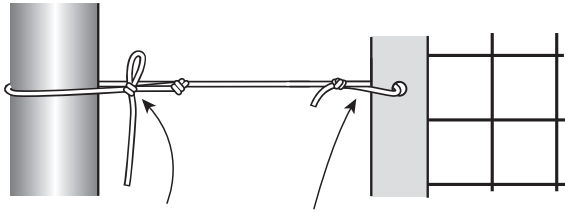


# VOLLEYBALL NET SIDE TENSION INSTRUCTIONS



UNITED VOLLEYBALL SUPPLY, LLC.  
14615 NE 91ST ST, BLDG B,  
REDMOND, WA 98052 • 1996-2007©  
VOLLEYBALLUSA.COM  
PH: 1-800-494-3933  
FAX: 425-827-2230

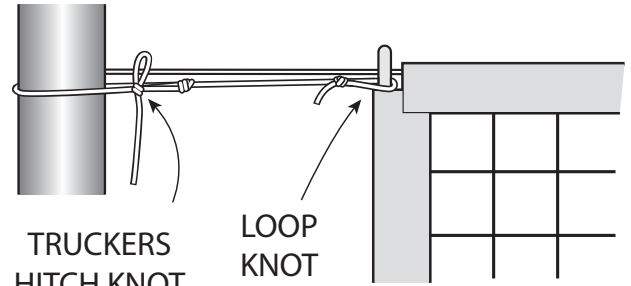
## VOLLEYBALL NET WITH GROMMETS



TRUCKERS HITCH KNOT

LOOP KNOT

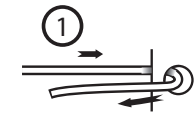
## VOLLEYBALL NET WITH DOWELS



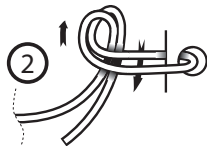
TRUCKERS HITCH KNOT

LOOP KNOT

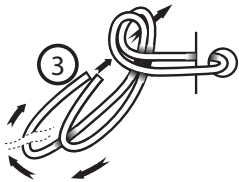
### HOW TO TIE A LOOP KNOT AROUND A GROMMET



1  
FEED ROPE END THROUGH GROMMET



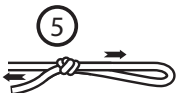
2  
FORM A LOOP WITH THE TWO ROPE LENGTHS



3  
FEED BOTH ENDS

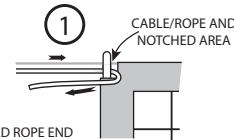


4  
ONE END WILL BE MUCH LONGER THAN THE OTHER

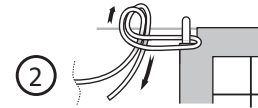


5  
TIGHTEN BY PULLING BOTH ENDS AWAY FROM LOOP END

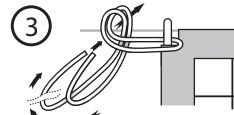
### HOW TO TIE A LOOP KNOT DOWEL



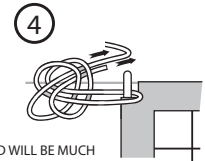
1  
FEED ROPE END THROUGH NOTCHED AREA BETWEEN NET AND CABLE/ROPE



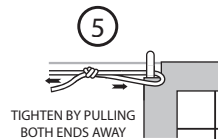
2  
FORM A LOOP WITH THE TWO ROPE LENGTHS



3  
FEED BOTH ENDS THROUGH THE LOOP



4  
ONE END WILL BE MUCH LONGER THAN THE OTHER



5  
TIGHTEN BY PULLING BOTH ENDS AWAY FROM LOOP END

### HOW TO TIE A LOOP KNOT



CUT UNDESIRED LENGTHS (OPTIONAL). FLAME TREAT ENDS OR CUTTING AREA WITH MATCH OR LIGHTER TO KEEP CORD FROM FRAYING. USE CAUTION WHEN WORKING WITH FIRE.

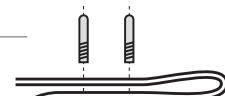
### CABLE CLAMPS - CLAMPING A WIRE LOOP

SMALL CABLE CLAMP



HORSESHOE BOLT

CABLE



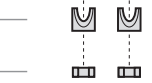
LARGE CABLE CLAMP



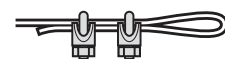
CABLE CLAMP



NUTS



CLAMPED CABLE WIRE LOOP



WHEN CLAMPING CABLE WIRE LOOP, ALTERNATE TIGHTENING THE NUTS OF EACH CLAMP TO GET MAXIMUM CLAMPING TENSION.

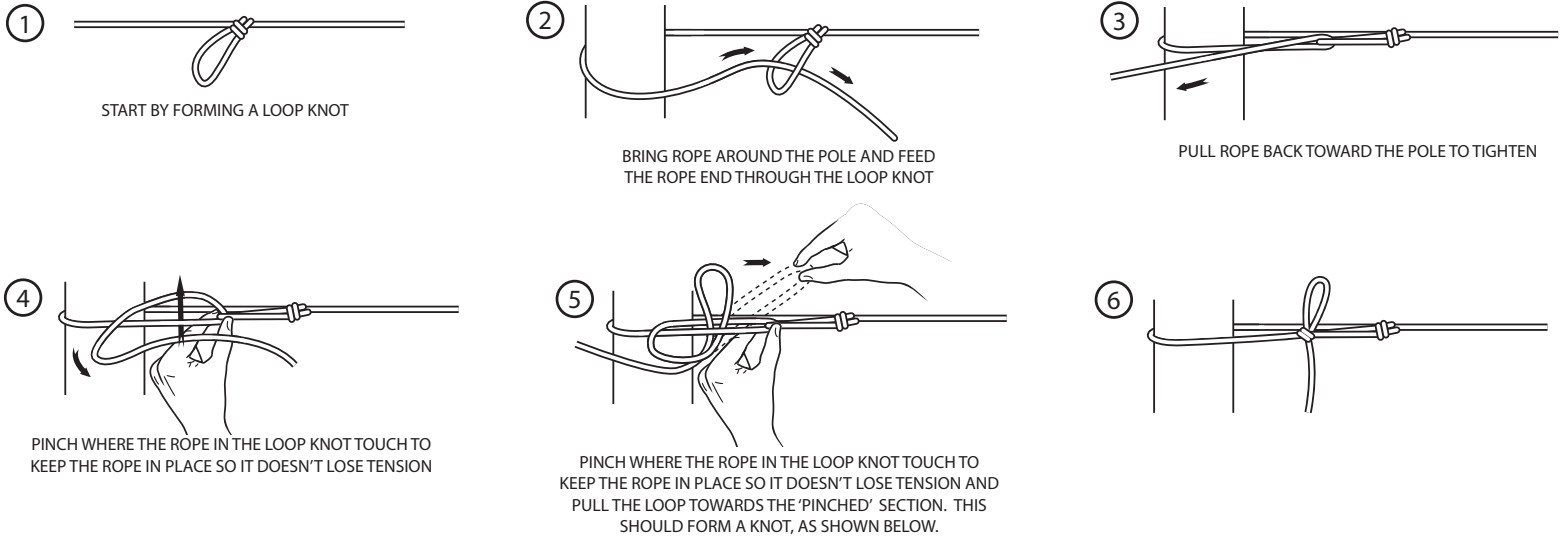
DOING EACH CLAMP ONE AT A TIME WILL NOT GIVE YOU THE BEST TENSION.



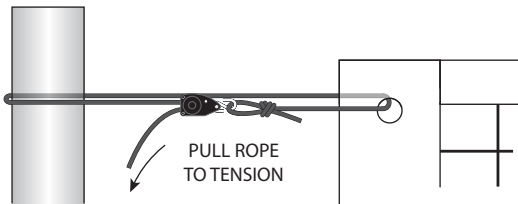
# VOLLEYBALL NET SIDE TENSION INSTRUCTIONS

UNITED VOLLEYBALL SUPPLY, LLC.  
14615 NE 91ST ST, BLDG B,  
REDMOND, WA 98052 • 1996-2007 ©  
VOLLEYBALLUSA.COM  
PH: 1-800-494-3933  
FAX: 425-827-2230

## HOW TO TIE A TRUCKERS HITCH KNOT



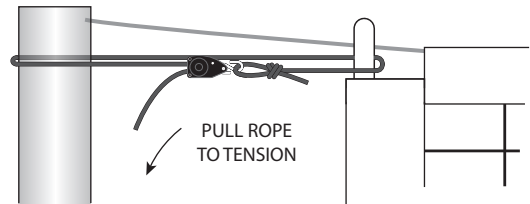
## ROPE RATCHETS (SOLD SEPERATELY)



### GROMMETS

Feed loop end through the grommet and ratchet around the pole, connecting both ends using the S-Hook. Pull ratchet rope to tension.

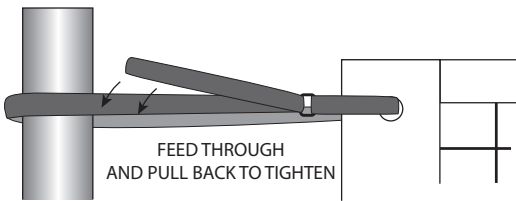
OR



### DOWELS

Feed loop end around the dowel and ratchet around the pole, connecting both ends using the S-Hook. Pull ratchet rope to tension.

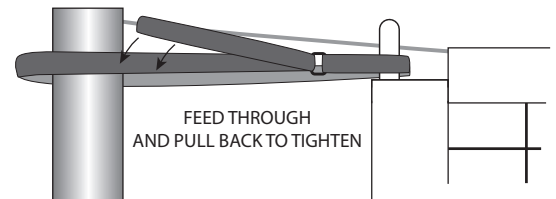
## VELCRO STRAPS (SOLD SEPERATELY)



### GROMMETS

Feed tail end of velcro strap (opposite of loop) through the grommet, wrapping around the loop. Pull back to tighten and velcro in place.

OR



### DOWELS

Feed tail end of velcro strap (opposite of loop) around the dowel, wrapping around the pole and feeding back through the loop. Pull back to tighten and velcro in place.